

كودس للإنشاءات ش.ذ.م.م
Codes Construction LLC

COMPANY PROFILE 2022

**Mechanical, Electrical & Plumbing (MEP) &
Fit-Out Works Contractor in Construction.**

Delivering environments that our clients can excel in. The drive for excellence and innovation is part of our DNA, maintaining Codes Construction LLC as the design and build contractor of choice in the built environment.

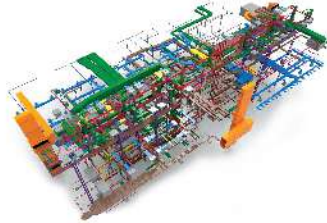


CODES
CONSTRUCTION

Creating tomorrow together.



TABLE OF CONTENTS



About Us	03
Our Business	04
Construction Operations	05
Projects Management	06
MEP Works	08
Pre-Engineering Capabilities	09
BIM Capabilities	09
MEP Modular Systems	10
Property Services	11
Building Maintenance	11
Fit-Out & Refurbishment	12
Management Structure	13
Company Structure	14
Our Sectors	15
Our Projects	16
Sustainability & Environment	40
Careers	41

ABOUT US

Codes Construction LLC, established in 2006, is one of the prominent MEP (Mechanical, Electrical & Plumbing) and Fit-Out works Contractor in the UAE Construction business. We employ over 1500 people and work with a wide range of public and private sector customers & partners.

Everything we do is guided by our purpose of working together to inspire better ways of creating the places, communities, and businesses of tomorrow. We are committed to the long-term sustainability of the built environment.

Our values, long term vision and financial independence enabled us to thrive throughout the economic ups and downs.

Our distinctive culture celebrates people, partnership and sustainability. We are always exploring new value engineered ways for the Construction industry to work together on strategic issues of reducing Construction and lifecycle cost.

Our Values

We all want Codes Construction to be the very best. Being the best means upholding the great reputation we built over the years.

Our 5 values have been with us throughout our development as an organisation and make a difference to the way we think, act and do business with our customers and suppliers.

Integrity:

Our relationships are built on trust. Those who work for us, and with us, have a right to be treated fairly. We will not compromise on maintaining the highest safety standards. Our reputation matters to us. We are here for the long term.

Intelligence:

We take an intelligent approach to everything we do. We pool our skills and energies in pursuit of the best solutions.

Performance:

Delivering value for our customers, partners and shareholders is the focus of our work. We work hard to generate excellent results.

Teamwork:

We are committed to realising our vision through teamwork. Our people and our processes work together in a connected and seamless way.

Respect for People & Communities:

We strive for an inclusive culture based on mutual respect. We respect each other, our suppliers, our customers, our partners, our communities and society at large.

RESPONSIBLE

TRUSTED

OUR BUSINESS

Our marketing strategy is simple:

we identify markets where we can add value & customers with whom we share values. In this way, we can understand what matters most to our customers, & help them deliver their business objectives by reliably delivering against those priorities.

Our business focuses on serving the Construction market in:

MEP (Mechanical, Electrical, Plumbing) & Fit-Out works. Each has their own team of dedicated specialists but can call on the extensive resources of the company to deliver expertise, whatever the demands of the project could be.

”

We are a **Responsible** safe working contractor with a **Focused** commitment to building a strong company. A **Trusted** brand, backed by a history since 2006, providing **Smart**, innovative and inspiring solutions, **Passionate** about every project we deliver. Our annual turnover is more than AED 200 million, with a multinational skilled workforce of over 1500.



Alan Charles,
CEO, Codes Construction

”

Above all, it's about people.

CONSTRUCTION OPERATIONS



Codes Construction has developed a number of programmes around the pre-Construction, procurement and handover processes to enhance our offering, increase customer satisfaction and build deeper relationships. These programmes enable us to ensure that we have the right people, with the right skills, in the right place, at the right time.

We specialise in maximising value by finding the most intelligent and creative ways to deliver outstanding buildings. With many years' experience, we have developed a real understanding of our customers' needs and have a proven track record in all our core markets: residential, commercial, hospitality, retail and mixed-use developments.

Proactive partnership:

True collaboration with our clients, consultants and supply chain partners means we deliver quality projects on time, on budget.

Focused sector expertise:

Led by influential and knowledgeable experts who understand the needs of our customers.

Early cost certainty:

A Plus capital and operational cost savings through effective and focused pre-Construction expertise.

Proven experience:

We are experts in sustainability and in delivering highly complex buildings in live operational and constrained brownfield environments.



Exclusive Residential Project: One at Palm Jumeirah - Omniyat

PROJECTS MANAGEMENT

With private & public-sector clients looking to secure efficiency savings throughout the build process, Codes Construction offers a way to combine greater commerciality with an integrated approach across our supply chain. This replaces traditional MEP procurement on some of our projects, allowing for greater partnership working with specialist sub-contractors to implement a tailored approach on a project-by-project basis.

This solution allows for the optimising of design solutions, delivering an end product for the clients. By complementing our strategy, we have been able to take into account economies of scale demanded by many projects. Managing the design process upfront also allows for a smoother installation process further down the line.

The benefits of this approach to procuring our works speak for themselves:



Pre-Construction

- » Design & BIM
- » Tender assessment and raising of qualifications.
- » Value for money tender with increased certainty.
- » Utilisation of the team's experience to provide value engineered alternatives.
- » Engineering support on live projects and providing solutions to on-site issues.
- » Cost Plan advice; suggesting cost-effective alternatives and lifecycle cost advice.



Project Management

- » All profit benefits the project
- » One team with one goal - no separate agenda
- » Work breakdown strategy allows for the removal of major MEP contractors' mark-up on sub-contractor costs



Site Management

- » Programme flexibility
- » Close co-ordination of on-site works
- » Direct control of third tier specialist sub-contractors
- » Monitoring of progress using marked-up drawings and progress photographs



Commercial

- » Reduction in specialist sub-contractor claims.
- » Direct cost control of specialist sub-contractors' variations.
- » Improved payment terms result in improved sub-contractor performance.



Commissioning

- » Improved quality - no hidden issues following occupation.
- » Early comment on commissioning allows 'Right First Time' installation and reduces aftercare requirements.



Handover & Aftercare

- » One direct Codes Construction point of contact.
- » Direct contact with installers improves response.
- » Improved payment terms with specialists increasing the performance.

Yas Island Waterfront
Apartments Project:
Water's Edge - Al Dar



MEP WORKS

(Mechanical, Electrical and Plumbing)

Our qualified engineers and skilled technicians are experts in most of the known MEP systems available in the market. We execute following MEP systems' pre-engineering, supply, installation, commissioning and maintenance works:

Plumbing & Fire Fighting

- » Solar Water Heating
- » Fire Fighting and Fire Protection
- » Cooled Cold Water and Hot Water
- » Domestic and Industrial Water Pump
- » Drainage, Irrigation and Storm Water
- » Kitchen Equipment and Sanitaryware Installation.

Mechanical

- » Rooftop Package Units.
- » Air Handling and Heat Pump
- » Variable Air Volume (VAV)
- » Plate and Frame Heat Exchangers.
- » Exhaust, Make-up Air and Air Purifying
- » Centrifugal, Air and Water-Cooled Chiller
- » District Cooling and Building Management
- » HVAC / Air-Conditioning (Indoor and Outdoor).

Electrical

- » High Voltage Power
- » Power Generation Solar
- » Smart Home Automation
- » Transformers and Substations.
- » Lightning and Earthing Protection
- » Fire Alarm and Public Addressing
- » UPS and Central Emergency Battery
- » Power Systems; MV-LV Switchgears.
- » Fibre Optic Cabling and Data Networking.
- » SCADA & PLC Power and Process Control
- » Power Generators and Energy Management
- » Building Security CCTV and Access Control
- » IPTV, Audio-Video, Intercom and Telephone
- » Lighting Control, Indoor and Outdoor Lightings.
- » Cable Distribution; Trays, Ladders and Bus Ways.
- » Power Distribution, MCC, DDCP and ATS Panels.

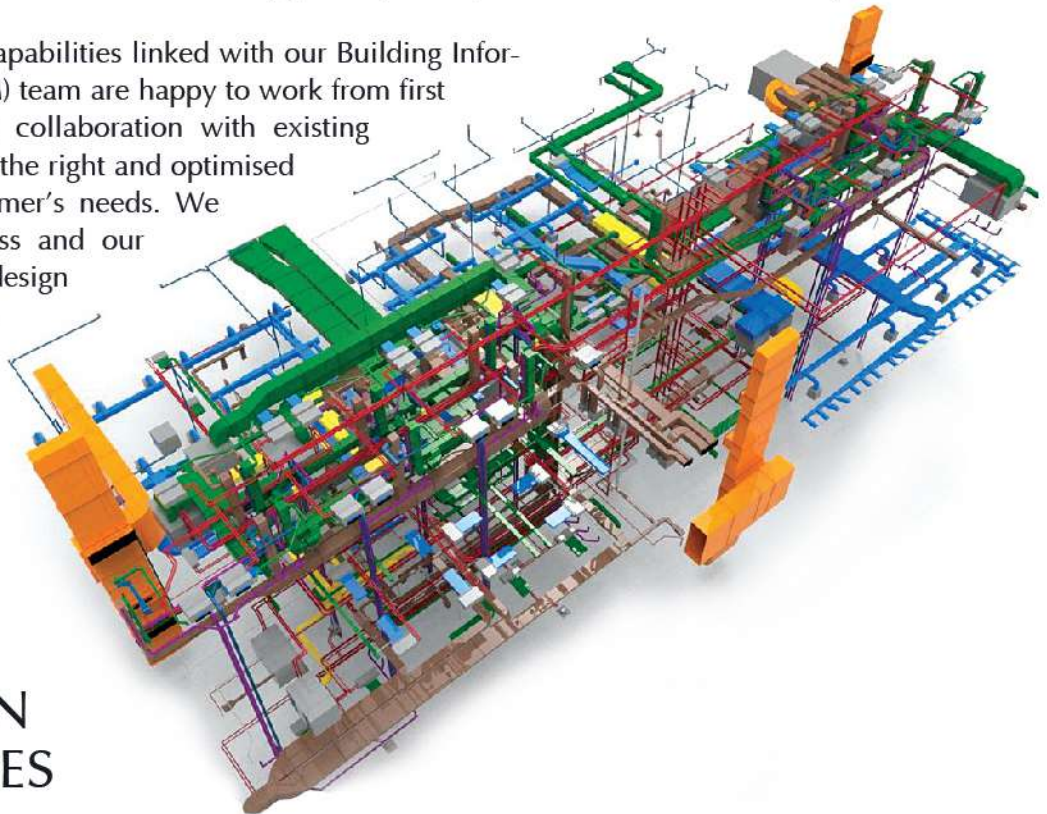


PRE-ENGINEERING CAPABILITIES

Codes Construction delivers for a wide range of customers by creating environments that our clients can excel in. The drive for excellence and innovation is part of our DNA, maintaining Codes Construction as the design and build contractor of choice in the built environment.

Codes Construction delivers MEP services that are derived from an exceptional level of technical authority. We deliver bespoke design-led solutions and optimise productivity for the whole Construction team, by maximising off-site manufacture in our production facility of Modular systems. We are committed to the 'art of pre-Construction'. Our designers, engineers and production teams are committed to reducing on site hours, and delivering our solutions in a safer, greener, more professional and efficient way.

Our in-house design capabilities linked with our Building Information Modelling (BIM) team are happy to work from first principles or work in collaboration with existing design teams to create the right and optimised solution for our customer's needs. We are a thinking business and our philosophy is to use design and technology to evolve solutions, environments and performance.



BIM DESIGN CAPABILITIES

Bespoke services to meet your needs - We deliver bespoke mechanical and electrical services, providing whole life solutions based upon a client's requirements & aspirations. Our early engagement on projects consistently leads to a reduction in project costs and programme delivery.

Building Information Modelling (BIM) - BIM forms an integral part of our service solution. The in-house team brings a practical, commercial and collaborative approach to ensure all technical aspects and risks of a project are managed fully. The services we offer cover the complete built environment lifecycle and are encapsulated within a BIM framework from engineering services, prefabrication, installation and commissioning bringing value to our business and clients in a number of sectors.

Off-site building solutions – Codes Construction offers a modern, innovative and forward-thinking solution that presents an accurate and affordable option to labour intensive, time consuming on-site production and assembly. We are leading the industry utilising off-site Construction of building services across a wide range of industry sectors. Our bespoke modules can be adapted to include various combinations of mechanical and electrical functionality which is designed and built to fit the needs of our clients.

MEP MODULAR SYSTEMS

We realise the benefits of off-site Construction of engineering services & integrated build solutions across a wide range of industry sectors. Offering clients, a modern, collaborative, innovative & forward-thinking solution that presents an accurate & affordable option to labour intensive, time consuming onsite production & assembly.

Our bespoke solutions can be adapted to include various combinations of mechanical, electrical & build functionality which are designed to fit to individual buildings.

The benefits of off-site manufacture are:

- » Minimal Waste
- » Less Site Congestion
- » Reduced Programme Risk
- » Improved Quality Control
- » Reduction of worked man hours on site



Solution Examples:

- » Plantroom Skids
- » Residential Utility Cupboards
- » Pre-fabricated Brackets Manufacture
- » 2D & 3D Service Modules (incorporating fire, acoustic and wall solutions)
- » Fully Packaged Plantrooms (mechanical, electrical and controls services fully tested)
- » Bespoke Project Requirements identified through collaborative workshops and pre-construction process
- » Wiring Solutions
- » Fully Serviced Riser Solutions



PROPERTY SERVICES

(Building Maintenance & Fit Out)

Our FM and Fit-Out divisions provide a range of property services to our portfolio of clients which span sectors including retail, education, sport and leisure, and the public sector.

We specialise in providing high quality Fit-Out, refurbishment and building maintenance solutions and act as a trusted partner for our customers, developing smart solutions that are tailored to their needs and optimise the performance of their premises. This allows them to focus fully on their core business.



We are specialists in:

- » Overcoming difficult issues in logistically challenging situations.
- » Delivering to the highest quality without any compromising safety.
- » Working to suit customers' needs, 24 hrs. per day, 7 days per week.
- » Delivering within business critical, secure, live and occupied environments.

BUILDING MAINTENANCE

We help clients keep their worlds functioning smoothly. How? By managing 100% up time all of the time and providing brilliant service.

We're all about people; people who are proud to be part of our team. We trust and empower them to solve problems. We challenge everything we do to improve our clients' experience. And by doing this, we protect their output, their reputation and their brand. We work together with our clients as partners, helping them manage their environments.

We believe our clients deserve 5-star customer service. Our ideas are inventive. We're specialists in making spaces work efficiently, realising their true potential; whether front of house or behind the scenes, giving our clients' confidence and total peace of mind. And it means they trust us and keep working with us – year after year after year.

We provide total building maintenance solutions for our clients, self-delivering planned and reactive MEP services, with an absolute focus on 100% uptime of critical building infrastructure.

Management visibility, transparency and flexibility to the changing needs of our clients' day-to-day operations distinguish our partnership approach. We fully align with each client's culture and support their business objectives. This ensures that they keep working with us year after year.

COMMITTED

FIT-OUT & REFURBISHMENT

From food and fashion outlets to premium office space, we deliver high quality fit-out and refurbishment services for our customers, creating attractive, efficient and profitable spaces that support our clients' business strategies.

Our highly skilled teams have a wealth of experience and a robust track record in undertaking a range of services from minor refresh works and conversions to full developer shell fit-outs and complex refurbishment projects.

We are experts in delivering fast-track programmes within live environments, without compromising on quality or safety. We manage these requirements whilst delivering often complex projects on time and on budget.

This agile approach and attention to detail means that we often deliver beyond our customers' expectations and have developed long-term relationships with our key partners.



Property Upgrade

We are dedicated to ensuring our customers' buildings function as they should - preserving the value of their estate, whilst satisfying legal obligations and achieving the best value from their built assets.

We deliver a full range of property upgrade services, making sure that our customers get the most out of their buildings. This encompasses reactive building repairs and planned maintenance works including air - condition and boiler replacements, re-roofing, yard repairs, upgrading staff and student welfare facilities.

Our teams are experienced in providing a full turnkey solution, supporting our customers at every stage - from conducting surveys and producing drawings to providing costings and installing services or undertaking critical compliance works.

We understand that each customer has a unique set of requirements. So, by working collaboratively and proactively, we can plan a programme that adds real value & ensures every project runs smoothly, on time and to budget.

MANAGEMENT STRUCTURE



I believe that good business, well done, is a force for good in society. The Codes Construction Corporate Governance Principles are a tool that helps us look ourselves in the mirror, to see where we've done well, and where we can raise our corporate governance standards to a higher level. Good corporate governance is not about box-ticking. It can only be achieved if we think seriously about why we exist and how we deliver on our purpose then explain - in our own words - how we go about implementing the principles. That's the sort of transparency that can build the trust of stakeholders and the public.

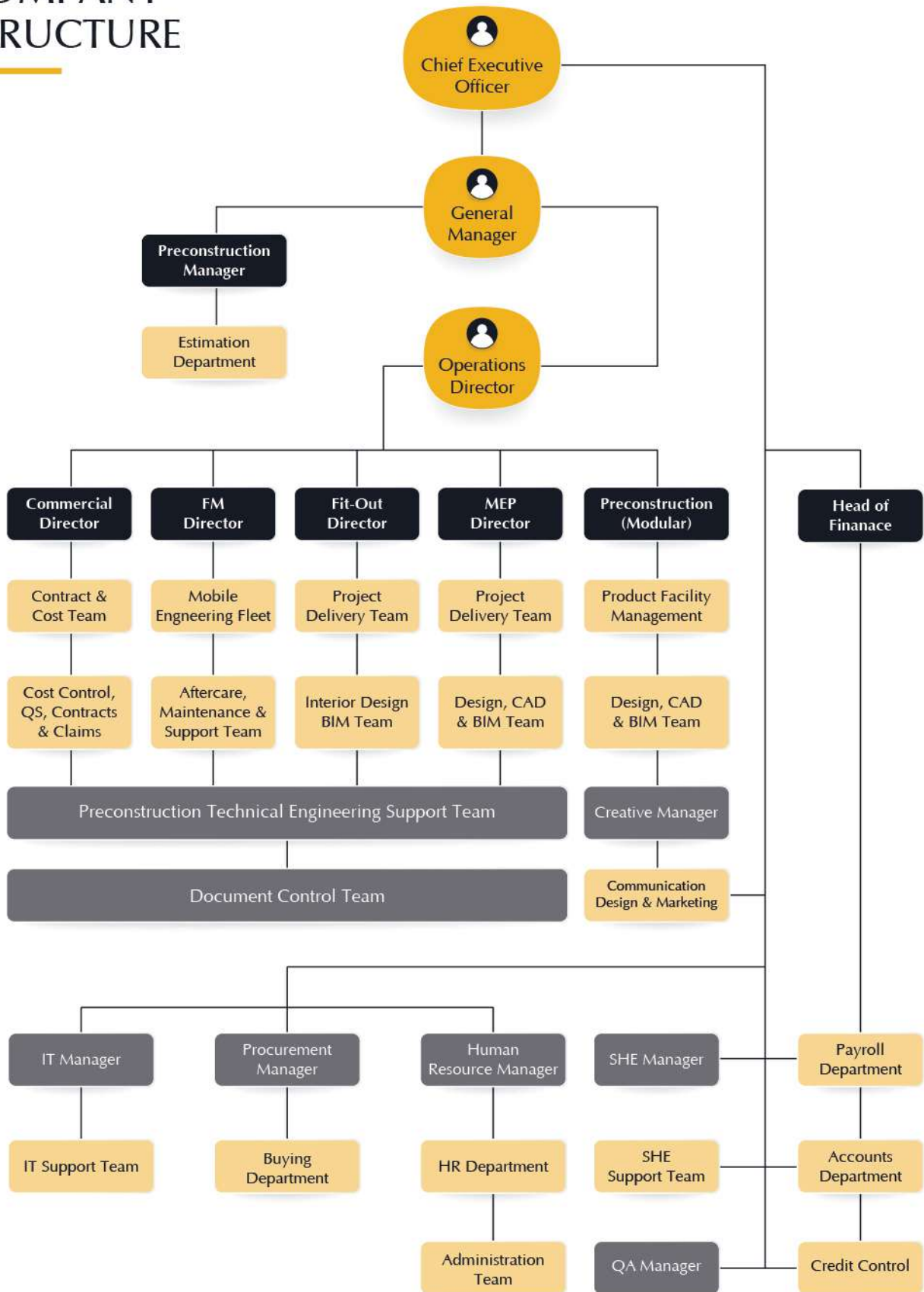
Khalid Saif,
General Manager, Codes Construction



FOCUSSED



COMPANY STRUCTURE



■ Leadership	■ Senior Management Team / Directors
■ Operational Support	■ Department Team(s)

THE SENIOR MANAGEMENT TEAM

Responsible for your project are supported by our Board of Directors and a strong operational network providing consultant support to advise best design, help develop the perfect scheme, and ensure efficient estimation, commercial management and BIM related services are delivered.

OUR SECTORS



Codes Construction understands that working with experienced people in your sector, with knowledge of your project type is important. Our tried and tested processes, understanding of your priorities, use of innovative time and money saving technology, expertise around planning and legislation including funding and environmental requirements make us sector specialists.

Our focus is primarily on four key target sectors: residential, retail, commercial, government/public sector projects where we have strong relationships with customers with visible pipelines of work.

Residential and Hospitality Projects

We have an extensive track record in residential towers, hotels and house building. We understand that our works have a direct impact on the lives of individuals and their surrounding communities and take a people focused approach, ensuring minimal impact from site works.

Codes Construction's experienced team offers a range of capabilities from new build residential towers to luxury villas, townhouses and hotels. Our proposition ensures maximum value is delivered from every development while retaining high quality developments with a flawless finish.

Retail and Commercial Projects

Codes Construction is a trusted partner in the delivery of world-class commercial and retail facilities for clients.

Our team works collaboratively with all project stakeholders, contributing from pre-Construction, adding value certainty and reducing risk. Our expertise and package procurement drive commercial efficiencies through the process and we can offer the design and Construction flexibility to guarantee your ability to successfully market your finished project to deliver on your business plan.

Codes Construction's expertise spans the life-cycle of a commercial building, from design and build to refurbishment, fit-out and maintenance. This enables us to maximize your asset by offering solutions to enable your building to attract quality end-users for years to come by adding value through sustainable building management and striking design.



Fit-out and Refurbishment

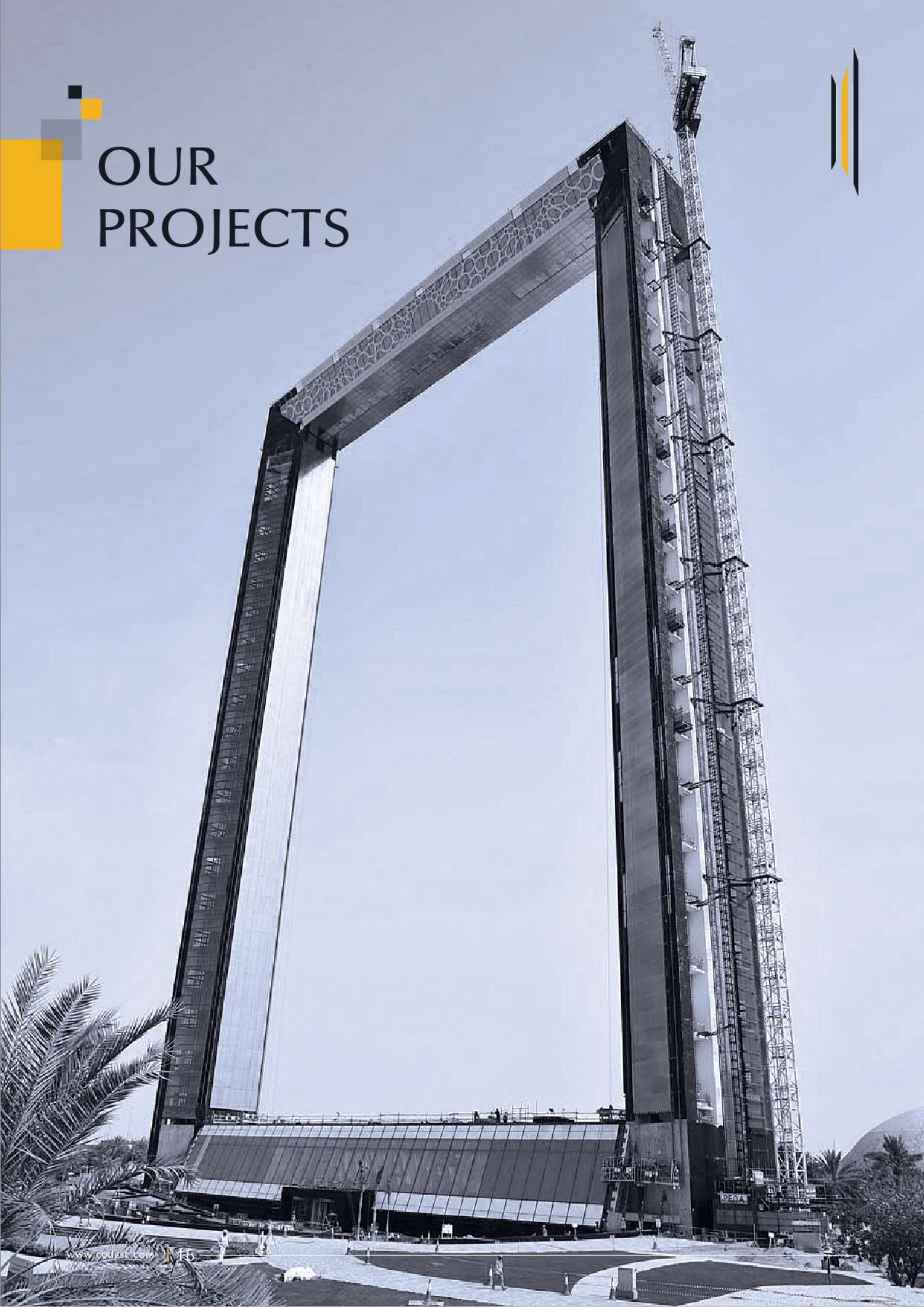
The most important thing to us is that our customers get exactly what they want if not more. We're perfectionists in our field and crucially we make sure we're totally aligned to our clients and continually exceed their expectations in terms of quality and delivery.

We can achieve this thanks to our agile and flexible approach and attention to the detail.

We carefully select our people to suit each individual project whether it's a complete fit-out or refurbishment. And in doing so, we are able to overcome the everyday challenges that are associated with such projects.



OUR PROJECTS





Yas Island Waterfront Apartments Project: **Water's Edge - Al Dar**



Luxury Apartments Project: **The Sterling - Omniyat**



Iconic Project: **The View at The Palm - Nakheel**

COMPLETED MAJOR PROJECTS

BUILDING MEP WORKS



Project Name	Nalaya Community Villas Development
Client	Reem Developers
Consultant	RSP Middle East FZCo
Scope	Complete MEP Package.
Contract Value (AED)	17,900,000



Project Name	New Guest House at Ruwais for ADNOC
Client	ADNOC
Consultant	CBD
Scope	Complete MEP Package of the Workforce Accommodation for ADNOC.
Contract Value (AED)	47,000,000

OUR PROJECTS



Project Name	Hydra Avenue C4, C5 and C6
Client	Hydra Properties
Consultant	Prime Engineering Consultants
Scope	Complete MEP Package.
Contract Value (AED)	103,000,000

OUR PROJECTS



Project Name	Danet Holiday Inn Hotel
Client	Al Qudra Real Estate
Consultant	Architectural Engineering Consultants
Scope	Complete MEP Package
Contract Value (AED)	46,000,000



Project Name	Institute of Applied Technology
Client	UAE Armed Forces
Consultant	Syrconsult Engineering
Scope	HVAC and Plumbing Works
Contract Value (AED)	30,000,00

PROJECTS



Project Name	Al Jimi School and Al Muweiji School in Abu Dhabi
Client	Musanada
Consultant	KN International Architects + Engineers
Scope	Complete MEP Package.
Contract Value (AED)	32,000,000



Project Name	3 Basement + 23 Storey Tower for Sheikh Khalifa Bin Sultan Bin Shakhbout
Client	Al Shurfa Real Estate
Consultant	Syrconsult
Scope	Complete MEP Package.
Contract Value (AED)	25,000,000



Project Name	Commercial and Residential Building, Plot # 24, Danet
Client	Sorouh Real Estate
Consultant	EHAF Engineering
Scope	Complete MEP Package.
Contract Value (AED)	65,000,000



Project Name	Offices and Workshops for Reem Emirates Aluminium
Client	Reem Emirates Aluminium
Consultant	Serex International
Scope	HVAC and Plumbing Works
Contract Value (AED)	8,000,000



Project Name	Al Assala Services Workshop and Offices
Client	Al Assala Trading
Consultant	Chawla Architectural and Consulting Engineers
Scope	Complete MEP Package
Contract Value (AED)	19,000,000



Project Name	Al Raha Beach Hotel Extension
Client	International Capital Trading
Consultant	RNL
Scope	Electrical Power and Extra Low Voltage Works
Contract Value (AED)	9,000,000



Project Name	Mudon (2) Development Phase 3 - Neighborhood "J" Dubailand, Dubai
Client	MDN Real Estate LLC
Consultant	Engineering Consortium Consulting Engineers
Scope	496 Villas – HVAC and Plumbing
Contract Value (AED)	52,000,000

OUR PROJECTS



Project Name	Ambulatory Health Care Centre
Client	Abu Dhabi Health Services Company
Consultant	HDP Overseas Ltd.
Scope	Utilities and MEP Works
Contract Value (AED)	12,800,000



Project Name	Juma Mosque No. 1, 2 and 3 at Emirati Housing Development, Jebel Hafeet, Al Ain
Client	Trojan General Contracting
Consultant	ACE International Consulting Engineers
Scope	Juma Mosque Nos. 1, 2 and 3 - Plumbing, HVAC, Electrical Power, Lighting, Extra Low Voltage, Fire Alarm and Fire Fighting Works.
Contract Value (AED)	14,400,000



Project Name	Water's Edge – Yas Island
Client	Al Dar Properties
Consultant	WS Atkins
Scope	13 Buildings 2B+G+P+9 Electrical Power, Lighting and Extra Low Voltage Works
Contract Value (AED)	77,000,000



Project Name	Danet Mall, Plot No. C60
Client	Hydra Properties
Consultant	National Engineering Bureau
Scope	HVAC Works
Contract Value (AED)	17,000,000



Project Name	Yas Acres (North Yas) Development, Phase 1, Yas Island
Client	Aldar Properties
Consultant	ACE International Consulting Engineers
Scope	Aecom Middle East Ltd. - Abu Dhabi and Michael Chabowski Technical Services 652 Luxury Villas - HVAC & Plumbing Works.
Contract Value (AED)	62,250,000



Project Name	Palm Tower
Client	Nakheel PJSC
Consultant	RSP Architects Planners and Engineers
Scope	56 Floor Hotel on top of the Palm Mall HVAC and Plumbing Works
Contract Value (AED)	49,000,00

OUR PROJECTS

OUR PROJECTS



Other Ongoing Projects List - Building MEP Works:

S.#	Project Description	Scope	Client	Consultant	Main Contractor	Value (AED)
1	RDK 3 Towers, Residential, (3B + G + 14)	MEP	RDK Commercial Investment LLC	Mark Habre and Associates	Jiangsu Nantong Liu Jian Construction Group	90M
2	6 RDK Buildings at DIP, (G + 6 + R)	MEP	RDK	Emirates Innovation	Jiangsu Nantong Liu Jian Construction Group	66M
3	Nakheel Mall – Restaurants	MEP	Nakheel		SPML	25M
4	3 EMARAT FILLING STATIONS: Al Ghanayem Filling Station, Grayteesah Filling Station, Wadi Al Shabak Filling Station	MEP	Emarat	Al Gurg Consultants	City Diamond Contracting	13M
5	Beit Al Khair Society (2B + G + 5)	MEP	Juma Al Majid Consultant	Engineering and Trading LLC	East Coast Contracting	11M
6	Arabian Ranches 2 - Reem Community Town Houses	Electrical	EMAAR	Al Gurg Consultants	Metac General Contracting	29M
7	Grand Cosmopolitan 5 Star Hotel (2B + G+M + 6TYP + Gym + Roof)	MEP	NCC	EDMAC	NBHH / Envicon Emirates	21M

Other Completed Projects List – Building MEP Works:

S.#	Project Name	Scope	Consultant	Client / Main Contractor	Value (AED)
1	Dubai Mall (Entertainment Centre)	Fit Out	Hyder Consultants	Al Hamidiah	40,500,00.00
2	Mr. Hamdan Mubarak Obaid Hareb Al Shamsi Asharej / Beddaben Ammar, Plot-10, Alain	MEP	ADCE and High Life Engineering Consultant	Al Awsaf General Contracting	9,066,000.00
3	Stations In Western Region Ghayati North Service Station Plot # P1045 Western Region Abu Dhabi for ADNOC Distribution	MEP	Al Burj Engineering Consultant	Ranya Contrating Est.	4,500,000.00
4	Remodeling, Improvement and Refurbishment of Al Sadara School in Al Ain	Electrical	Urban Planning Architectural	Ranya General Construction Co.	2,700,000.00
5	Typical Floors for Post Office Building, Al Wahda (B + G + M + 15)	Fit Out	Horizon Conaulting Company	Al Hamad Contracting	1,800,000.00
6	Labour Accommodation Muhaisanah-2 (G+2)	MEP	Style Consultant Engineers	Al Shafar Contracting	1,225,000.00
7	Proposed G + M Building Al Buteen	MEP	Eng. Adnan Saffarini	Dar Al Etemad Contracting	800,000.00
8	Proposed G + 1 Floor Storage Shed.	MEP	Amcon Architectural and Engineering Consultants	Obaid Hareeb Contracting	622,500.00
9	G + 12 Building Al Nahda	MEP	Khatib & Alami	Al Shafar Contracting	1,280,000.00
10	Labour Accommodation Muhaisanah-2 G + 2 (Block-a, Block-B & Block-C)	MEP	Style Consultant Engineers	Al Habbai Contracting	1,895,000.00
11	Proposed Development & Construction of The Arabian Desrt	MEP	Meydan LLC	Al Ajyal Elect. Sant. and AC Fix	3,000,000.00
12	G+ Mezz Building	MEP	Eng. Adnan Saffarini	Al Etimad Contracting.	400,000.00
13	2B + G + 8 Typ. Residential Building at Jumeirah Palm	MEP	Turner	Al Jadeed Electromechanical Co.	22,450,000.00
14	2B + G + 7 Residential Building	MEP	NEB	ACT Contracting Co.	18,800,000.00
15	35 Medical Clinics at Dubai Helth Care City Alrazi Building	MEP	EDAMA	Formed	4,400,000.00

S.#	Project Name	Scope	Consultant	Client / Main Contractor	Value (AED)
16	Dubai Metro Project - Union Square Station	MEP	Thales	Atlas Telecommunications	840,000.00
17	2B + G + M + 15 Typ. Residential Building	MEP	Eng. Adnan Saffarini	Alrashad Contracting	850,000.00
18	10th & 17th Floor of Executive Heights Tower	MEP	DAMAC Management	Carawan Electrical and Mechanical Works	500,000.00
19	Meydan Race Hores		TAK	TAK	3,236,721.25
20	G + M + 4 Typ. - Sharjah Alestqlal Road	PLM	Middle East Co.	Dalia Contracting	1,200,000.00
21	Package 1 & 2 School Refurbishment Programe for Abudhabi General Services (PSJC) Musanada @ Al Ameen Primary School (Al Ain)	ELEC.	Conseco International	Ranya General Construction Contracting	2,400,000.00
22	Construction of Madina Zayed / Abu Al Abdyad Service Station – Plot. P1204 in Western Region, Abu Dhabi for ADNOC Districbution	MEP	Al Burj Engineering	Ranya Contracting Est. Consultant	3,600,000.00
23	Borouge 3 Utilities and Offsites Temporary Facilities for Hyundai Site Office at Al Ruwaise	MEP & Civil	Mark Habre & Associates	Hyundai Engineering and Construction	27,800,00.00
24	Borouge 3 Utilities and Offsites Temporary Facilities for Hyundai Camp at Gayathi Abu Dhabi	MEP & Civil	Mark Habre & Associates	Hyundai Engineering and Construction	22,748,222.00
25	Sheikh Khalifa Houbara Breeding Center, Abu Dhabi - UAE	MEP	Houbara Lab Design	Al Awsaf General Contracting	13,200,000.00
26	CBM (G+1) Building, at Al Ain	MEP	Houbara Lab Design	Al Awsaf General Contracting	690,000.00
27	Boulevard Tower	MEP	Aedas Limited	Emaar Properties PJSE	3,250,000.00
28	Temporary Bus Depot Old Eid Rayer Yard, Abu Dhabi	MEP	Jurong International Consulting Pvt. Ltd.	Ranya General Contracting Co. LLC	4,850,000.00
29	Smart Learning System for 8 Nos. Schools	MEP	Ministry of Education UAE	Smart Learning Authorities	6,032,100.00
30	Proposed Commercial Development for Heirs of Abdulla Saeed Mabrooq Saeed Al Hamiri Plot	MEP	Adce and Arco Engineering Consultant	Al Awsaf General Contracting	2,413,000.00
31	Al Mutakamela Vehicle Testing Center Plot # 3653908 3653912 at Al Quoz Dubai	MEP	Yaghmour	Zein Steel for Steel Structures	3,200,000.00
32	Residential Building for Abdul Rahman Abdul Hadi Mufreh Al Ahbabi at Al Ain	MEP	Al Qassem Engineering Consultant	Al Awsaf General Contracting	1,000,000.00
33	Residential Building for Mr. Juma Salem Al Kabi @ Aljimiati Al Ain	MEP	Hili Engineering Consultant	Al Awsaf General Contracting	1,312,000.00
34	2012 Refurbishment Schools Program Emirates College Type-B, Abu Dhabi	MEP	UPA Engineering	Aswar Engineering & General Contracting	14,500,000.00
35	Saudi Airlines Regional Office in Dubai	MEP	-	Sketches Interiorsdesign	1,080,000.00
36	Abu Dhabi Tourism and Culture Authority's New Corporate Office at Nation Tower, Abu Dhabi	MEP	Bluehaus Engineering	ISG	1,091,555.00
37	First International Group @ I-Rise Tower	MEP	-	Sketches Interior Design	610,000.00
38	Chilled Water Re-balancing Works at Dubai Marina Mall & Gourmet Tower	MEP	Meinhardt (Singapore) PTE Ltd.	Carawan	1,050,000.00
39	Shell & Core Shop in Old Town Emaar Boulevard	MEP	-	DBB	1,545,870.00
40	Dhamani Jewelry, at The Dubai Mall	MEP	R&R Design	FDC Interiors	600,000.00
41	Ymc Paddock Club Extension at Yas Island, Abu Dhabi - UAE	MEP	Mechanical and Electrical Consulting Engineers	ISG	1,000,000.00
42	Daman National Health Insurance Company New Headquarter Office Abu Dhabi	MEP	Bluehaus Engineering	ISG	6,040,000.00
44	Masood Naqvi Mosque	MEP	Architecture and Planning Group	DBB	1,612,208.00
45	Pre-release Facilities and Clinic Buildings at Asweihan Al Ain	MEP	Houbara Lab. Design Ltd.	Al Awsaf General Contracting	2,792,500.00

S.#	Project Name	Scope	Consultant	Client / Main Contractor	Value (AED)
46	Shama Bin Mohammad School Refurbishment Program	MEP	UPA Engineering	Ranya Contracting Est.	13,750,000.00
47	Smart Learning School Program 2014	MEP, Civil	Ministry of Education	Carawan	16,792,100.00
48	Smart Learning School Program 2015	MEP, Civil	Ministry of Education	Carawan	14,247,908.00
49	Smart Learning School Program 2016	MEP, Civil	Ministry of Education	Z&t	26,645,000.00
50	Wood Group PSN, Level 22, International Tower, Abu Dhabi	MEP	Chapman BDSP	ISG	1,709,500.00
51	Etihad Office @ Siemens Hq Building Level 2,3 & 4 @ Masdar City, Abu Dhabi	MEP		ISG	5,147,752.00
52	3 Residential Buildings (G+11) on Plot# Afra 05, Afra 06 and Afra 11 at Al Furjan, Dubai.	MEP	CVTEC	SS Lootha	37,500,000.00
53	Dubai Opera District 5 Wall Openings - Connecting Between Boulevard Car-Park and Opera Basement	MEP & Civil	AECOM	Al Ghandi & CCC	17,845,350
54	Hotel Apartments, Afra 01 & 03 at Al Fujan, Dubai	MEP	360degree Architectural Desgn Consultancy	Al Kaitoob Building Contracting	32,500,000.00

Completed Individual Private Villa Projects List Complete Turkey Including Civil, MEP and ID:

S.#	Project Description	Consultant	Main Contractor
1	(G+1) Villa at Al Wasal	Style Consultant Engineers	Codes Construction LLC
2	Villa (G+1) for Mr. Yaqoob Altamimi	Sepctum Engineering	Codes Construction LLC
3	Villa (G+1) for Mr. Jaber Al Harbinad Al Sheba	Arenco Engineering	Codes Construction LLC
4	2 Villas (G+1) with Service Block for Mr. Ahmad Hilal-Nad Alsheba	F.A. Baker Engineering	Codes Construction LLC
5	2 Villas (G+1) with Service Block for Mr. Asmawi - Al Qouz Residential	Adnan Saffarrini Engineering	Codes Construction LLC
6	Villa (G+1) for Mr. Sulaiman Alhammadi - Alwarqa 3rd	Sepctum Engineering	Codes Construction LLC
7	Villa (G+1) for Mr. Marwan Alhammadi - Alwarqa 2nd	Sepctum Engineering	Codes Construction LLC
8	Villa (G+1) for Mr. Nader Almuhari - Alwarqa 2nd	Sepctum Engineering	Codes Construction LLC
9	Villa (B+g+1) for Mr. Khalid Bin Killi at Alkhawanej	Speace Engineering	Codes Construction LLC
10	Villa (G+1) for Mrs. Maryam	Style Consultant Engineers	Codes Construction LLC
11	Villa (G+1) for Mrs. Muza	Style Consultant Engineers	Codes Construction LLC
12	Villa (Ground + One + Kitchen Block) for Rashid Ibrahim Yaqoob Ahmad Al Tamimi	Lines Engineering Consultant	Codes Construction LLC
13	Villa (Ground + One) for Saud Ibrahim Yaqoob Ahmad Al Tamimi	Lines Engineering Consultant	Codes Construction LLC
14	Villa (Ground + One + Blocked) for Abdulaziz Ibrahim Yaqoob Ahmad Al Tamimi	Lines Engineering Consultant	Codes Construction LLC

Completed Fit-Out Projects:

S.#	Project Name	Consultant / Client	Client / Main Contractor
1	Garlicos Restaurant at Arbaian Center	Arabian Managements	Richline Decore
2	Outbak Restaurant at Festival City	Fistival City Managements	Richline Decore
3	Fish and Co Restaurant at JBR	Dubai Retail Managements	Richline Decore
4	Dunkin Donuts at Ajman City Center	City Center Managements	Richline Decore
5	Dunkin Donuts at Alwarqa Center	Alwarqa Center Managements	Richline Decore
6	Dunkin Donuts at Dubai Mall Kidzania	Hyder Consultants	Richline Decore
7	Wrap Shop at Arbian Center	Arabian Managements	Richline Decore
8	Dunkin Donuts at Mirdif Center	Mirdif Center Managements	Richline Decore
9	Outbak Restaurant at Dubai Mall	Emaar Management	Richline Decore
10	Fish & Co. Restaurant - D.F.C.	Food and Life Co.	Richline Decore
11	Private Office for Abdul Allateef Alsaygh	Tecom	Atelier 21 Inetrior Design
12	Dukkan Falfel Restaurant - Jumeirah	ENOC Management	Richline Decore
13	Dukkan Falfel Restaurant - Alwarqa	ENOC Management	Richline Decore
14	Dukkan Falfel Restaurant - Medows	ENOC Management	Richline Decore
15	Dukkan Falfel Restaurant - Sharjah	ENOC Management	Richline Decore
16	Wendy Arbys Restaurant - Al Wasal	ENOC Management	Richline Decore
17	Rawabina Restaurant and Central Kitchen	Middle East Co.	Atelier 21 Inetrior Design
18	Wendy Arbys Restaurant - Al Aweer	ENOC Management	Richline Decore
19	Wendy Arbys Restaurant - Al Barsha	ENOC Management	Richline Decore
20	Dominos Pizza - Al Barsha	ENOC Management	Richline Decore
21	Dominos Pizza - Sharjah	ENOC Management	Richline Decore
22	Tawasi Central Kitchen	Food and Life Co.	Richline Decore
23	Dunkin Donuts - Cotor City	Food and Life Co.	Richline Decore
24	Dunkin Donuts - Sharjah	Food and Life Co.	Richline Decore
25	Wendy Arbys Restaurantmushref Mall	ENOC Management	Richline Decore
26	Wendy Arbys Restaurant - Ajman	ENOC Management	Richline Decore
27	Dominos Pizza - Sahara	ENOC Management	Richline Decore
28	Appetite Restaurant - Jafza	Virtus	Atelier 21 Inetrior Design
29	Dunkin Donuts - Fujeirah	ENOC Management	Richline Decore
30	Dukkan Falfel Restaurant - Jafza	ENOC Management	Richline Decore
31	Wendy Arbys at Fujairah	MAF	Richline Decore
32	Wendy Arbys at Mirdiff	MAF	Richline Decore
33	Charlys at Fujairah	MAF	Richline Decore
34	Just Falafel Bur Dubai	ENOC	Richline Decore
35	Just Falafel D.F.C	D.F.C	Richline Decore
36	Dunkin Donuts - Murgab	QHC	Richline Decore
37	Dunkin Donuts - Juraina	QHC	Richline Decore
38	Dunkin Donuts - Khan - Sharjah	QHC	Richline Decore
39	Burger King - Sharjah	ENOC	Richline Decore
40	Galvani - TDM	Emaar	Sketches
41	Washia - TDM	Emaar	Makan Interiors
42	Dukkan Shawerma	ENOC	Richline Decore
43	Dukkan Falafil - Khalifa City	ADNOC	Richline Decore
44	Dukkan Falafil - Jafza	ENOC	Richline Decore
45	Dunkin Donuts - Ibin Bathootha	ENOC	Richline Decore
46	Dunkin Donuts - Bur Dubai	ENOC	Richline Decore
47	Dunkin Donuts - Majaz	ENOC	Richline Decore
48	Fatayer Al Khaleej	ADNOC	Sketches Interiors
49	Nice Care Clinic	Ideas	Richline Decore
50	Wendy Arby Ibn Batutta Mall	Richline Decore	Richline Decore
51	American University of Dubai	Carawan	Carawan
52	Steaky Restaurant – Emaar Boulevard	Emaar	Richline Decore
53	Texas Chicken @ Adnoc Fujairah Beach	ENOC	Richline Decore



SUSTAINABILITY AND ENVIRONMENT

‘Reshaping Tomorrow’ is our framework for a sustainable future.

Our aim is to help our customers create better buildings while leaving a positive legacy. We focus on the key environmental and social issues where we can collaborate with our peers to make a real difference to the built environment. These include energy efficiency and carbon; waste; sourcing products and services in a responsible and ethical way; water efficiency and being good neighbours. By integrating these principles throughout our projects, we can deliver more sustainable buildings for our customers and help to shape the communities around them.

Corporate responsibility and sustainability are embedded in everything that we do and our efforts are coordinated by our teams, led by our Chief Executive Officer, Alan Charles. Our code of conduct sets out the ‘Codes Construction Way’, so that everyone knows what’s expected of them. It’s based on our values of performance, respect for people & communities, intelligence, teamwork and integrity.

Environment

The Construction industry has a major impact on the environment and faces significant challenges in making environmental improvements. We are committed to protecting the environment and ensuring that our actions today do not have an adverse effect on the future.

Responsible Sourcing is also one of our key priorities. We aim to ensure that our supply chain understands the sustainability challenges the Construction sector faces and that the materials we buy are procured in a responsible and ethical way.



CAREERS

Working Together, Connecting & Creating Safer Working Environments

We are focused on setting the standards for others to follow, and paramount to this are our teams of innovative, multiskilled, experienced and ambitious individuals. We value each member of the team and at CODES you are not just a number.

Be a part of us. Be successful. Be CODES.

Rewards + Recognition

It's not just Codes Construction as a company that is recognised for its achievements, individuals are too. Hard work doesn't go unnoticed at Codes, we recognise and reward such individuals as well as providing opportunities for all with work benefits such training, education and more.

Innovation

Whether it's for our teams or our clients, we pioneer and see value in innovation that makes work, systems easier, safer and more efficient.

Skills + Training

We believe in investing in the future and part of this is giving all the opportunity to train and learn, strengthening skills and experience to make our teams better. Currently we run graduate schemes, work placements and apprenticeships.

LIFE AT CODES

For the latest updates on work opportunities with us, please visit our [Careers](#) and [LinkedIn](#) pages. Apply for the role which suit you best. When you succeed, we succeed.

Register your interest to join us by sending your updated CV via careers@codesc.com. As requirement arises, our careers team will review your resume and get in touch with you.



Diversity in Construction

We want to shout out that Codes Construction is a great place to work for all individuals regardless of colour, race, religion, gender, age, nationality, marital status or disability, whatever career path you decide to follow.

Our teams work to uphold diversity and support equal opportunities. We strive for continuing improvements in supporting women getting into construction and those seeking more senior roles. We are proud to showcase all individuals and teams at Codes.



MEP & Fit-Out Partners in Construction.

Codes Construction LLC

Al Makateb Building, Level 1
Al Quoz 3, Sheikh Zayed Road
P.O. Box 888185
Dubai, United Arab Emirates.

T +971 4 546 3566
F +971 4 443 0748

E info@codesc.com

